

Gildemeister NEF 600 V1



CNC - lathe machine

Machine type: Gildemeister NEF 600 V1

Control: Heidenhain IT Turn Plus

Year: 2008



Alle Maschinen optional mit

✓ **SERVICE-PAKET**

Abbau - Verladung - Transport - Inbetriebnahme

SPECIFICATIONS:

Max. turning length: 1.250
[mm]

Max. swing over bed: 600
[mm]

Max. swing over slide: 410
[mm]

Spindle bore: [mm] 90

Amount of controlled
axes: 2

Spindle speeds: [rpm] 3.000

Spindle power: [kW] 36,5 / 27,5

Torque: [Nm] 785

Tailstock MK 5

Quill 80mm

Amount of turrets: 1

Path X-Axes upper rev. VDI 40/8
/ lower rev.:

Tool capacity: 8

Machine weight: [kg] 5.500

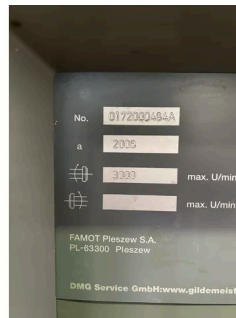
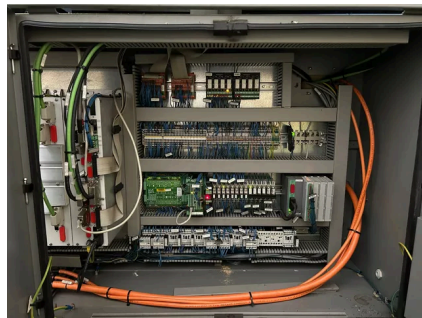
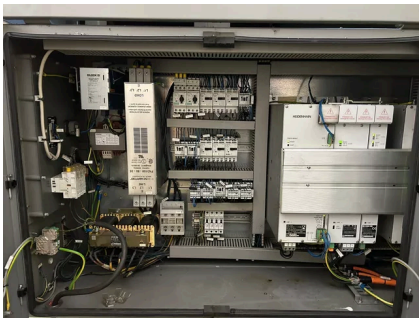
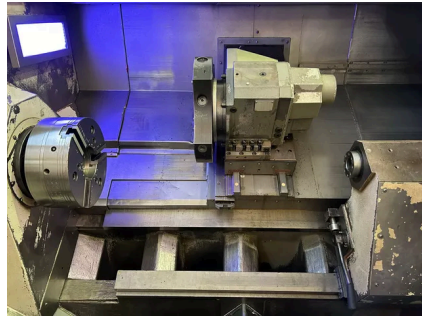
Equipment:

Chip conveyor

ohne Absaugung /
sans Aspiration

Req. space (LxBxH): 5,0 x 2,0 x 2,2 m

[m]



+49 (0)611 5 10 1990 info@stenzel.de