

Used machine data sheet DMG Mori NHX 5000 (Ge2)

Horizontal machining center

Machine type: DMG MORI NHX 5000

Control: M730UM mit Celos

Year: 2017



Used machine DMG Mori NHX 5000 (Ge2)

SPECIFICATIONS:

Travel:

X-Axis: [mm]	730
--------------	-----

Y-Axis: [mm]	730
--------------	-----

Z-Axis: [mm]	880
--------------	-----

Rapid motion: (X/Y/Z) [m/min.]	60
--------------------------------	----

Feed: (X/Y/Z) [m/min.]	60
------------------------	----

Spindle speeds: [rpm]	15.000
-----------------------	--------

Spindle motor: [kW]	37
---------------------	----

Torque: [Nm]	250
--------------	-----

Toolchanger

Tool:	HSK 63
-------	--------

Tool capacity:	60
----------------	----

Work piece diameter: [mm]	70 / 140
---------------------------	----------

Tool length: [mm]	550
-------------------	-----

Tool weight: [kg]	12
-------------------	----

Palett system

Amount of paletts:	2
--------------------	---

Palett size: [mm]	500 x 500
-------------------	-----------

B-Axes	0,001°
--------	--------

Work piece diameter: [mm]	800
---------------------------	-----

Workpiece thickness: [mm]	1.000
---------------------------	-------

Max. Table Load: [kg]	700
-----------------------	-----

Req. space (LxBxH): [m]	3,1 x 4,86 x 2,84
-------------------------	-------------------

Machine weight: [kg]	11.200
----------------------	--------

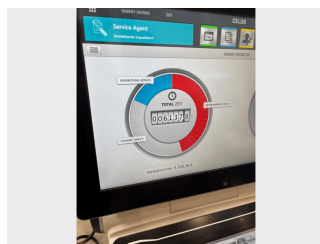
Equipment:

Chip conveyor	
---------------	--

Filtration system	Knoll KF 110/700
-------------------	------------------

Internal cooling: [bar]	70
-------------------------	----

Pictures: DMG Mori NHX 5000 (Ge2)



Optional with service package



Professional and comprehensive service for our customers has always been a cornerstone of our business. Together with our cooperation partner 5X Machines GmbH, we offer you a professional all-round service tailored precisely to your needs for machine purchases.

Would you like to organize the transport yourself or have the maintenance of a used machine carried out by your own technicians? From the low-cost Basic package to the comprehensive Premium package, you will always receive the right combination of services with an optimum cost-benefit ratio when purchasing a used machine.

High-Quality machines for individual requirements

For more than 100 years we have been your partner for machine tools worldwide. Our company Specialization lies in the purchase and sale of used machines for the following areas: Mechanical engineering, vehicle construction, electrical engineering, precision mechanics and optics, aircraft construction, plastics processing and much more. A special focus of our assortment are lathes, machining centres and bed milling machines from renowned manufacturers such as DMG, DMG Mori, Mori Seiki, Hermle, Hedelius, Weiler and Doosan.

Everything we do focuses on the individual needs of our customers. We supply modern manufacturing companies with high-quality machines and thus make a significant contribution to their business success.